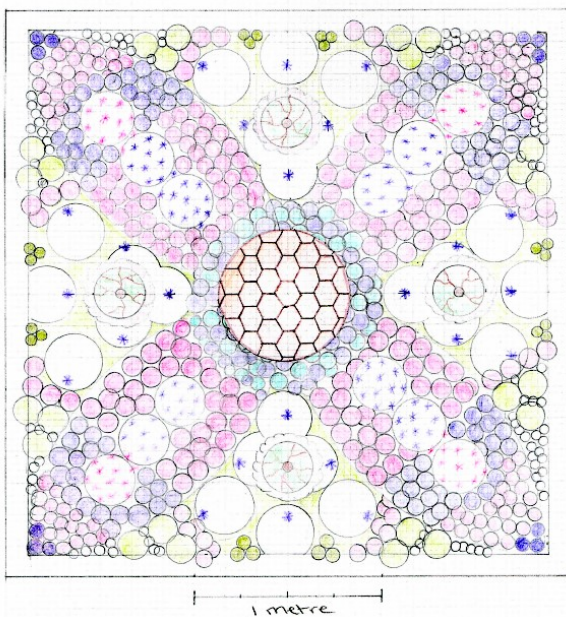


THE PLANTING LIST



Standard holly bushes
 Rose Lovely Bride
 Allium Globemaster
 Allium schoenoprasum
 Astrantia major Claret
 Digitalis Dalmatian Purple
 Erigeron karvinskianus
 Geranium Ann Folkard
 Iberis Masterpiece
 Lavender Hidcote
 Lobularia Snow Princess
 Monarda bee balm
 Scabiosa Flutter Pure White
 Stachys superba
 Thymus serpyllum
 Verbena rigida



www.aspectgardensolutions.co.uk
info@aspectgardensolutions.co.uk
 07770 806607

Katie's Garden Plant Centre, Ipswich Road, Newbourne,
 Woodbridge IP12 4NS



www.katiesgarden.co.uk
 01473 736717



THE DESIGNER BED

Installed June 2021

FLOWER POWER 'FOOD FOR THOUGHT'

*"An environment where bees, pollinators and insects
 can **thrive**
 is just as important to us as it is to them.*

"Without them, we wouldn't have any food."



ASPECT
 GARDEN SOLUTIONS

Katie's Garden has a long-standing relationship with Suffolk-based Lisa Calver of Aspect Garden Solutions.

Her design 'Food for Thought' was originally due to appear at last year's BBC Gardeners' World Live show, with plants supplied by Katie's Garden. Lisa won her place at the show through a successful entry in a Gardeners' World Magazine design competition.

Covid nixed the 2020 event, leading to a sell-off of many of the plants that were grown for it - you might be one of the many who has an Allium, Astartia or Rose that had been destined for Birmingham NEC!

The show is now set to take place in late August this year but as the design is reliant on plants with much earlier flowering times the garden is instead on temporary show here in Newbourne.



ABOUT THE DESIGN

The square needs to be on the level to appreciate the differences in plant heights and shapes formed.

The design is formal to show wildlife areas don't have to be hidden areas out of view, just low in footfall.

As a result the plants selected require little dead heading so can be left alone to look after themselves, which is perfect for both the wildlife and busy lives.


The design can easily translate to front gardens, sited to one side of a path or next to a sun-trap patio close to the house. Something pleasing to look at and listen to.

The colour palette was selected for animals' needs: purple as the bees see and find that easiest; white for moths, and twilight end-of-day enjoyment for people too.

The plant selection is both nectar-and pollen-rich with a soft, romantic, aesthetically pleasing feel.

The main globe structure has been designed as a haven for wildlife. Vertical struts are for butterflies, while many types of insect can make use of all the nooks and crannies. Acorns and twigs have been foraged from local woodlands.

BBC
Gardeners'
WorldLive

Sponsored by:  LEXUS

17 - 20 June 2021 | Birmingham NEC



 [VISIT](#)  [WHAT'S ON](#)  [EXPERTS](#)  [EXHIBIT & SPONSOR](#)  [BLOG](#) 

[Home](#) > [What's On](#) > [Show Gardens](#) > [Beautiful Borders](#) > [Lisa Calver](#)

FOOD FOR THOUGHT...

An environment where bees, pollinators and insects can thrive is just as important to us as it is to them. Without them, we wouldn't have any food.

The plants on which the flowers grow offer some shelter, food and a haven for them to move around in relative safety. By planting a wide range of nectar and pollen rich plants we can attract a rich diversity of beneficial insects.

Flowers are attractive not only because some we can eat; their beauty enlightens our lives. When we give them the time, they calm our senses, uplift our moods and feed our souls too.